

april 2011 hospitalitydesign.com

hospitality design

spring forward

projects, products, people
for a new season

GLADOW NEAD
COMMUNICATIONS

HOSPITALITY DESIGN
APRIL 2011

gem in the rough

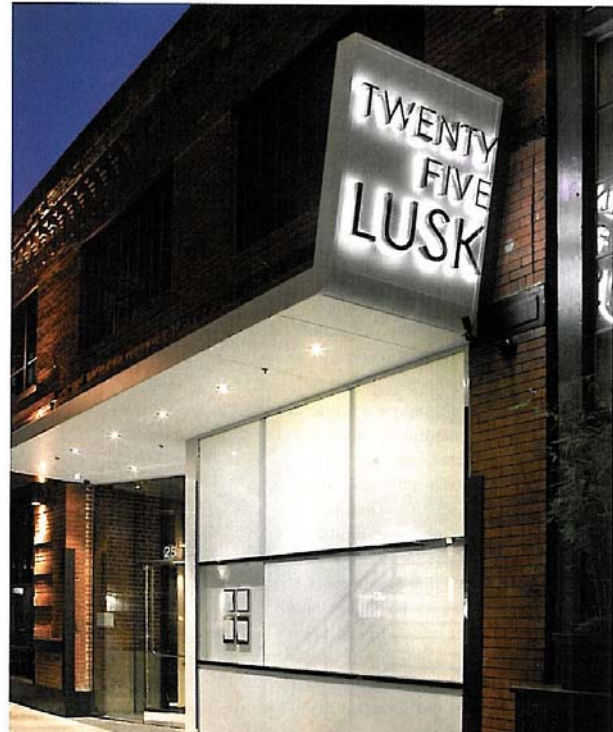
Creating a sense of discovery
in San Francisco

Twenty years ago CCS Architecture designed its first Bay Area restaurant, the infamous Restaurant LuLu in the South Market, SoMa District, an eclectic neighborhood of renovated lofts, galleries, and San Francisco's Museum of Modern Art. Now the firm has crafted Twenty Five Lusk, an upscale restaurant/lounge in the same area.

"Twenty Five Lusk is a gem in the rough," says Cass Calder Smith, founder of CCS Architecture, mentioning that he knows the area well: his offices have been in a converted warehouse in the SoMa District for the past 15 years. "Throughout the design process we played on the sense of enjoyment that comes from discovering a new place, especially one on an obscure alley."



This photo: In the warehouse-turned Twenty Five Lusk restaurant, Cass Calder Smith created a mezzanine level to connect the lower level lounge and the upstairs dining room. *Right:* The restaurant's large glass entrance was cut into the existing building.



By Shelley Gabert
Photography by Paul Dyer





Even getting to the dining room from the street vestibule entry is a see-and-be-seen experience. Guests ascend a staircase that's surrounded by a plastered wall tube/canal with cutouts "allowing them to take in views of both levels simultaneously," Smith says.

The completed effect is a counterpoint of old and new: Smith mixed shiny polished stainless steel, white plaster, leather, faux fur, and slate with the existing brick, concrete, and rough-sawn timber. "When you're designing a space it's like writing a narrative and it is rewarding when it comes to life," he says. www.ccs-architecture.com; www.25lusk.com



Left, from top: The glowing, sleek bar; the chef's table is surrounded by brick walls and expansive windows. *Opposite page, from top:* Stainless steel fire orbs in the lounge create a campfire-like effect; former smoking rooms were converted into semi-private, brick and concrete lounge chambers dubbed Make Out Rooms.

Located in a 1917, 15,000-square-foot warehouse, once the Ogden Packing and Provision smokehouse and meat-processing facility, Twenty Five Lusk's glass entrance is cut into the existing brick building; Smith added a white modern canopy that seems to underline the space's old name, while one end bends up to house the restaurant's new name, done in neon. Enlarged and extra windows along the façade facing Lusk Alley offer views into the lighted contemporary interior making the space a bright and inviting spot on an otherwise dark side street. "We created a stylish 'Gucci' interior to showcase executive chef Matt Dolan's food. Like a white tablecloth restaurant but without the tablecloth," says Smith of his 10th restaurant in the Bay Area, 50th overall.

Yet the main challenge of the \$3.5 million renovation of the 9,800-square-foot, two-story space was connecting the fine dining room on the second floor with the lounge on the lower level. To that end, Smith cut away a large portion of the 120-seat dining room's floor over the lounge below to create a mezzanine effect. In addition to tables and banquettes, a row of Pullman-style booths were built into the low plaster wall bordering the cut-away featuring cantilevered tables made from Macassar ebony that pierce the wall. Stainless steel fire orbs in the lounge are suspended from the ceiling of exposed Douglas fir beams 20 feet above, providing another visual link between the two levels.





Twenty Five Lusk
San Francisco

Owners Matthew Dolan, Chad Bourdan,
and Chris Dolan

Architecture and Interior Design Firm
CCS Architecture, San Francisco

Architecture and Interior Design

Project Team Cass Calder Smith, design
principal; Bryan Southwick, project
architect; Barbara Turpin-Vickroy, director
of interior design; and Melissa Werner,
artwork

Contractor Teutonic

Structural Engineer Peoples Associates

MEP Engineer ACIES Engineering

Lighting Consultant Luminesco Design

Food Service Federighi Design Inc.

ENTRY

Slate Flooring Echeguren Slate

Venetian Plaster Marmorino Venetian
Plasters

**MAIN DINING ROOM AND
UPSTAIRS BAR**

Broadloom Carpet Shaw

Tabletops Table Topics

Table Bases West Coast Industries

Main Dining Chairs Classic & Modern

Leather Upholstery Edelman Leather

Mirror Art Installation Designed by
Melissa Werner; fabricated by Monster
Route

PRIVATE DINING ROOM

Cina Fixture Plug lighting

Private Dining Table Custom designed
by CCS Architecture

Private Dining Chairs Andreu World
America

Chair Upholstery Architex

Mirror Art Installation Designed by
Melissa Werner; fabricated by Monster
Route

CHEF'S TABLE

Lighting Niche Modern

Chairs Andreu World America

Chair Fabric Architex

LOUNGE

Broadloom Carpet Shaw

Slate Flooring Echeguren Slate

Venetian Plaster Marmorino Venetian
Plasters

**Stone for Bartops/Tabletops/Fire Orbs/
Communal Table** CaesarStone

Fireplace Fire Orb

Drapery Fabricated by Cutting Edge
Drapery; fabric by Rodolph

BAR LOUNGE SEATING

Sectional Leather Edelman Leather

Ottoman Upholstery Architex and
Carnegie Fabrics

MAKE OUT ROOMS

Built-In Lounge Seating Custom
designed by CCS Architecture; fabricated
by B&L Seating

Upholstery Brentano and Castel